

# PosiTector<sup>®</sup> **DPM**

## Dew Point Meter

**Measures and records climatic conditions including:**

Relative humidity, air temperature, surface temperature, dew point temperature and difference between surface and dew point temperatures. Ideal for surface preparation as required by ISO 8502-4.



Select from 5 probe models



Available on the  
App Store



PosiTector<sup>®</sup>  
**SmartLink™**  
Compatible

### D A T A S E T \*

#### MEASURES

RH – relative humidity  
Ta – air temperature  
Ts – surface temperature  
v – wind velocity

#### CALCULATES

Td – dew point temperature  
Ts-Td – the difference between  
surface and dew point temperatures  
Tw – wet bulb

\* Dependent on model

**DeFelsko<sup>®</sup>**  
The Measure of Quality

# PosiTector<sup>®</sup> DPM Dew Point Meter

## All Gages Feature...

### Simple

- All readings are constantly updated and displayed simultaneously
- No need to consult complex tables or use a slide rule calculator
- Alarms indicate when climate conditions are unsuitable for painting

### Durable

- Solvent, acid, oil, water and dust resistant—weatherproof
- Shock-absorbing, protective rubber holster with belt clip
- Two year warranty on body AND probe

### Accurate

- Fast response precision sensors provide accurate, repeatable readings
- Smart Trend™ indicators identify rising, falling or stable readings
- Certificate of Calibration showing traceability to NIST included
- Conforms to national and international standards including ISO and ASTM

### Versatile

- PosiTector body accepts all PosiTector DPM, 6000, 200, RTR, SPG, SST, SHD, BHI and UTG probes easily converting from a dew point meter to a coating thickness gage, surface profile gage, soluble salt tester, hardness tester or ultrasonic wall thickness gage
- Auto Log mode records environmental parameters at user selected time intervals
- High contrast LCD with backlit display
- Flip Display enables right-side-up viewing
- Uses alkaline or rechargeable batteries (built-in charger)

### Powerful

- Every stored measurement is date and time stamped
- Screen Capture—save screen images for record keeping and review
- Sealed USB port for fast, simple connection to a PC and to supply continuous power. USB cable included.
- PosiSoft USB Drive—stored readings and graphs can be accessed using universal PC/Mac web browsers or file explorers. No software required.
- Includes PosiSoft suite of solutions for analyzing and reporting data

### Standard Models

**Includes ALL features as shown on left plus...**

- Storage of 2,500 datasets
- Auto Log mode runs unattended on batteries for up to 50 hours or continuously via USB

### Advanced Models

**Includes ALL features as shown on left plus...**

- Storage of 100,000 datasets in up to 1,000 batches
- **NEW** Enhanced Auto Log mode powers the gage off between readings for up to 8 months of battery life. Each reading can be uploaded to PosiSoft.net or an FTP server using WiFi. Automatically group readings into batches at daily, weekly, or monthly intervals
- User defined alarms for all parameters—visible and audible warnings. **NEW** Receive email alerts when connected to WiFi
- **Bluetooth** Technology for data transfer to a mobile device running the PosiTector App or optional portable printer
- Onscreen Batch Annotation—add notes, change batch names and more with built-in QWERTY keyboard
- Store thickness, profile, environmental and wall thickness measurements in individual batches
- Wet bulb temperature can be displayed and recorded
- Trend Charts graph readings in real-time

### PosiTector SmartLink™ Compatible

- Wirelessly connect PosiTector DPM and DPMS probes to your smart device
- Turns your cell phone or tablet into a virtual PosiTector gage
- Includes Free mobile app



For a complete comparison visit [www.defelsko.com/dpm](http://www.defelsko.com/dpm)

## Remote Monitoring with Auto Log Mode

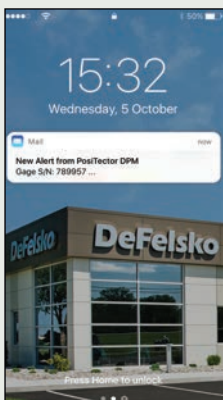
In addition to its capability as a handheld instrument, the PosiTector DPM Advanced model's innovative Auto Log feature can be used to...

- Monitor and record climatic conditions at user-selected intervals. Advanced models allow you to create new batches at daily, weekly or monthly intervals.
  - Upload readings to the cloud-based PosiSoft.net website after each measurement\*
  - Receive email alerts when readings exceed pre-defined parameters\*
  - Upload readings to an FTP server for integration with third party software\*
  - View environmental readings from one or more gages in remote locations from PosiSoft Desktop software or web-based PosiSoft.net
- \* requires an internet connection

Access your data from any web-connected device.



PosiSoft Desktop software includes the PosiTector DPM Monitor feature for continuous charting of readings from one or more dew point meters. PosiTector DPM Monitor refreshes data from PosiSoft.net once every minute.








Receive email alerts when readings exceed pre-defined parameters

ALARM SETUP		
Field	≤	Value
%RH:	≥	85.0
Ta:	≥	1.0
Ts:	≥	1.0
Td:	≥	1.0
Ts-Td:	≥	3.0
Alarm:	<input checked="" type="checkbox"/>	Sound: <input type="checkbox"/>
email Setup		
<input type="button" value="OK"/> <input type="button" value="Cancel"/>		

email Setup	
Enabled <input checked="" type="checkbox"/>	
When enabled, alarm alerts will be sent to the email address below.	
email address: <input type="text" value="alarm@defelsko.com"/>	
<input type="button" value="Test email"/>	
<input type="button" value="OK"/> <input type="button" value="Cancel"/>	





					
<b>Probe Description</b>	<b>Integral Probe with Direct Contact Surface Temperature Sensor</b>	<b>Integral Probe with Infrared Surface Temperature Sensor</b>	<b>Integral Probe with K-type Cabled Surface Temperature Sensor</b>	<b>Integral Probe with Wind Speed Sensor</b>	<b>Cabled Probe with 1/2" NPT Threads</b>
<b>Measured/Calculated Parameters</b>	Surface Temperature Air Temperature Wet Bulb Temperature* Relative Humidity Dew Point Temperature Surface Temperature minus Dew Point Temperature	Surface Temperature Air Temperature Wet Bulb Temperature* Relative Humidity Dew Point Temperature Surface Temperature minus Dew Point Temperature	Surface Temperature Air Temperature Wet Bulb Temperature* Relative Humidity Dew Point Temperature Surface Temperature minus Dew Point Temperature	Surface Temperature Air Temperature Wet Bulb Temperature* Relative Humidity Dew Point Temperature Surface Temperature minus Dew Point Temperature Wind Speed	Air Temperature Relative Humidity Dew Point Temperature
<b>Order Guide</b>					
<b>Standard Body and Probe</b>	<b>DPM1</b>	<b>DPMIR1</b>	<b>DPMS1</b>	<b>DPMA1</b>	<b>DPMD1</b>
<b>Advanced Body and Probe</b>	<b>DPM3</b>	<b>DPMIR3</b>	<b>DPMS3</b>	<b>DPMA3</b>	<b>DPMD3</b>
<b>Probe only</b>	<b>PRBDPM</b>	<b>PRBDPMIR</b>	<b>PRBDPMS</b>	<b>PRBDPMA</b>	<b>PRBDPMD</b>

\*Wet Bulb Temperature displayed/recorded on PosiTector Advanced (3) models only

**ALL GAGES COME COMPLETE** with environmental sensors, protective rubber holster with belt clip, wrist strap, 3 AAA batteries, instructions, nylon carrying case with shoulder strap (DPM/DPMA/DPMD), hard shell carrying case (DPMS), protective lens shield, Long Form Certificate of Calibration traceable to NIST, USB cable, two year warranty.

**SIZE:** 159 x 61 x 31 mm  
(6.25" x 2.4" x 1.2")

**WEIGHT:** 150 g (5.3 oz.)  
without batteries

Conforms to ISO 8502-4,  
BS 7079-B4, ASTM D3276,  
IMO PSPC, SSPC-PA7 and  
US Navy NSI 009-32.



**Hot-wire anemometer** with your choice of wind speed measurement units — m/s, km/h, mph, ft/s, ft/m, knots. DPM A models only.



**Flip Display** enables right-side-up viewing in any position. PosiTector DPM A shown.



**PosiTector DPM D probe** includes 1/2" NPT threads for insertion into pipes.



**PosiTector DPM IR probe** includes infrared surface temperature sensor.



**Analyze Readings** using a web browser from anywhere — jobsite or head office.

## Rugged Features...

Sealed USB Port  
for communicating  
with a PC or Mac

Water and dust  
resistant



High contrast color  
LCD with backlit display

Scratch/solvent/impact  
resistant lens

Multi-function  
navigation button

Solvent, acid, oil  
resistant, high grade,  
industrial strength  
housing

**Integral Probe  
shown**

Air temperature and  
humidity sensor

Built-in thermocouple or infrared  
surface temperature sensor



Specifications	Range	Accuracy	Resolution
Surface Temperature	-40° to 80° C	± 0.5° C	0.1° C
	80° to 190° C	± 1.5° C	
	-40° to 175° F	± 1° F	0.1° F
	175° to 375° F	± 3° F	
Infrared Surface Temperature*	-70° to 380° C	± 1° C + 1%**	0.1° C
	-94° to 716° F		0.1° F
Air Temperature	-40° to 80° C	± 0.5° C	0.1° C
	-40° to 175° F	± 1° F	0.1° F
Humidity	0 to 100%	± 3%	0.1%
Wind Speed†	0 to 20 m/s	± 3% Full Scale + least significant digit	0.1 m/s
	0 to 44 mph		0.1 mph
Dew Point	-60° to 80° C	± 3° C‡	0.1° C
	-76° to 175° F	± 5.4° F‡	0.1° F

\* DPM IR models only

\*\* At 23° C ambient

† DPM A models only

‡ dependent on RH. See [www.defelsko.com/TdAccuracy](http://www.defelsko.com/TdAccuracy) for more information.

### PosiTector DPM IR Specifications

Distance to Spot Ratio (D:S)	4:1
Emissivity	Adjustable
Response Time	<500 ms (95% response)

## Options

### PosiTector Probes

PosiTector bodies accept all PosiTector probes easily converting from a coating thickness gage to a surface profile gage, dew point meter, soluble salt tester, hardness and ultrasonic thickness gage.



### Bluetooth™ Printer

receives data from Advanced Models

### Rechargeable Batteries

a set of eneloop NiMH AAA batteries

### AC Power Kit

for continuous operation or battery charging — works in any country

### Protective Lens Shield

protect the display from overspray

## Additional K-type Sensors for use with PosiTector DPMS

### Hand-held Surface Temperature Probe (PRBDPMHSP)

- for spot checking hard-to-reach surfaces

### Liquid Temperature Probe (PRBDPMLTP)

- general purpose probe with stainless steel shaft

©DeFelsko Corporation USA 2018. All Rights Reserved. Technical Data subject to change without notice. • Printed in USA • PDPM.v.LW/W1803

**DeFelsko**  
Inspection Instruments

DeFelsko Corporation • 800 Proctor Ave. • Ogdensburg, New York 13669-2205 USA  
Toll Free 1-800-448-3835 • Tel: +1-315-393-4450 • Fax: +1-315-393-8471  
techsale@defelsko.com • [www.defelsko.com](http://www.defelsko.com)

**Made in U.S.A.**



Distributed by: ABQ Industrial LP USA  
Tel: +1 (281) 516-9292 / (888) 275-5772 eFax: +1 (866) 234-0451  
Web: <https://www.abqindustrial.net> E-mail: [info@abqindustrial.net](mailto:info@abqindustrial.net)



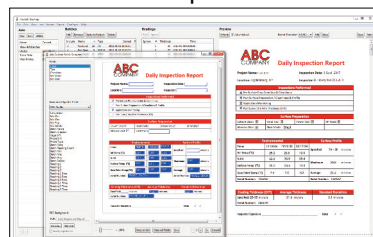
# PosiSoft® Suite of Software

Four FREE and unique ways to view and report your PosiTector and PosiTest data

## PosiSoft Desktop — PC/Mac

Powerful desktop software for downloading, viewing, printing and archiving measurement data. No internet connection required.

- Import readings directly from the gage via USB or from legacy PosiSoft desktop versions
- Synchronize measurement data including readings, notes and pictures to and from PosiSoft.net
- Import/Export Templates and Jobs to share with other users
- Import PDF forms and overlay **Custom Fields** for automatic population of inspection and measurement data
- Report preview automatically refreshes as changes are made



### Prompted Batch Mode

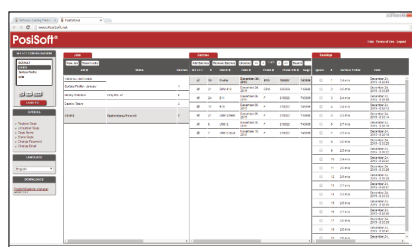
Create pre-defined batches with onscreen text and image prompts for each reading and upload to PosiTector 6000 gages (*Advanced models only*).

- Ideal for ensuring a consistent measurement pattern for repetitive jobs or when specific measurement locations are required
- Create and store multiple templates for different jobs

## PosiSoft.net — Web-based

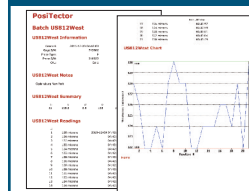
A web-based application offering secure centralized management of readings. Access your data from any web-connected device.

- Synchronize data when connected via USB or WiFi
- Synchronize measurement data including readings, notes and pictures with PosiSoft Desktop and PosiTector App
- Securely store measurement data in the cloud and share with authorized users via a secure login



Jobs Batches Readings

## PosiSoft USB Drive — Gage Based



A simple gage interface to retrieve data in a manner similar to USB flash drives, cameras, or digital audio players. No software to install or internet connection required.

- View and print readings and graphs using universal PC/Mac web browsers and file explorers
- Measurement data can be printed quickly from a formatted HTML report or exported in .CSV format for further analysis in spreadsheets
- Simple file management - Copy and paste measurement data from the PosiTector to a local folder on your computer, network folder or cloud drive
- Access stored screen captures (snapshots) of the PosiTector display

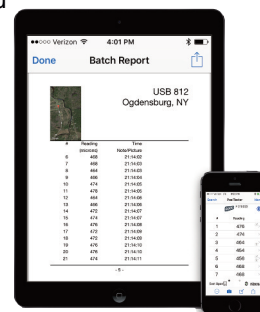


PosiTector and PosiTest AT-A instruments can integrate with third-party software, drones, ROVs, PLCs, and robotic devices using several industry-standard communication protocols.

## PosiTector App — Mobile

Mobile app connects PosiTector Advanced instruments, the PosiTector SmartLink and the PosiTest AT-A to your iOS or Android smart device.

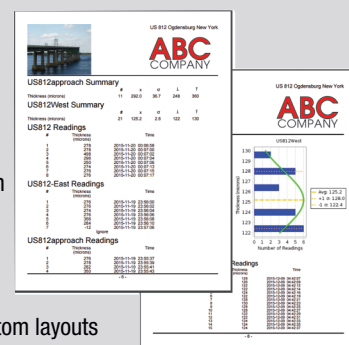
- Auto pairing Bluetooth BLE connection
- Automatically generate user-formatted reports and share via email, text, cloud storage services like Dropbox, and more
- Export readings to PosiSoft Desktop or synchronize readings to and from PosiSoft.net for further reporting and archival options



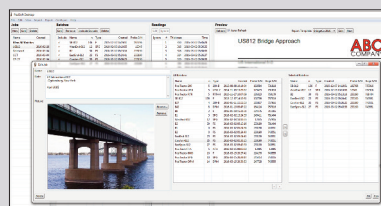
## PosiSoft Custom PDF Report Generator

Easily create reports from your measurement data in seconds.

featured on  
PosiSoft Desktop  
PosiSoft.net  
PosiTector App



- Include inspection information such as on-site pictures, screen captures, notes and more to communicate important details
- Create and save multiple custom layouts as templates – insert cover pages, add logos/images, and select font and point size
- Select the information to include for each product type – charts, histograms, readings, time stamps and more
- Compile multi-batch reports from one or more probes and instrument types
- Export readings as comma separated value (.CSV) files which can easily be imported into Excel and other supporting applications



**Jobs** feature consolidates batches into groups to keep measurement data organized and to quickly create multi-batch reports (not available on PosiTector App)

## PosiTector Developer Resources

including Bluetooth 4.0, WiFi, USB Keyboard, and USB Serial

**DeFelsko®**  
The Measure of Quality

DeFelsko Corporation • 800 Proctor Ave. • Ogdensburg, New York 13669-2205 USA  
Toll Free 1-800-448-3835 • Tel: +1-315-393-4450 • Fax: +1-315-393-8471  
techsale@defelsko.com • www.defelsko.com

  
**Made in U.S.A.**

©DeFelsko Corporation USA 2019. All Rights Reserved. Technical Data subject to change without notice. Printed in USA. PSoft.v.LW/W1908



**Distributed by:** ABQ Industrial LP USA  
Tel: +1 (281) 516-9292 / (888) 275-5772 eFax: +1 (866) 234-0451  
Web: https://www.abqindustrial.net E-mail: info@abqindustrial.net