

Suction power will not decrease during extended use, even for the suction of highly viscous fumes caused by laser marking, which typically cause filter clogging.



CBA-1500AT3-HC-DSA-V1

CBA-1000AT3-HC-DSA-V1

CBA-750AT3-HC-DSA-V1



High pressure
type



24 hours
operation



Control panel
AT3 panel
details P.4-P.5



Remote control
feature
details P.5



Vibration
type



RoHS
compliant



CE
compliant



Clean rooms
compliant

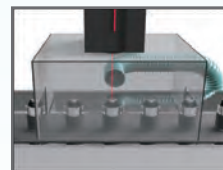
List of Applications



Dust & fumes collection during
vehicle headlight production



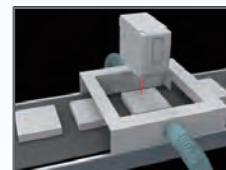
Fume extraction when manually
marking duracon



Fume extraction when laser
processing bearings



Fume extraction when marking
resin connector



Collection of dust & fumes from
silicon isolator

Filter Type

Model	Primary filter	Secondary filter	Exhaust filter	Activated carbon cassette
CBA-750AT3-HC-DSA-V1	HDF-3030-120-F1-ZEO	HEP-1714-30	HEP-2720-69	ACC-2720-75
CBA-1000AT3-HC-DSA-V1	HDF-3535-120-F1-ZEO	CHF-2030-50-F1	HEP-3220-69	ACC3220-100
CBA-1500AT3-HC-DSA-V1	HDF-3535-176-F1-ZEO	CHF-2030-50-F1	HEP-3225-69	ACC3225-125

Easily Detachable Flange Type (sold separately)

Model	φ38	φ50	φ65	φ75
CBA-750AT3-HC-DSA-V1	FRJ-D-38-35-108	FRJ-D-50-35-108	FRJ-D-65-35-108	Standard
CBA-1000AT3-HC-DSA-V1	FRJ-D-38-35-108	FRJ-D-50-35-108	FRJ-D-65-35-108	Standard

Suction Flange Type (sold separately)

Screw fixing type for CBA-1500AT3-HC-DSA-V1.

Model	φ38	φ50	φ65	φ75	φ100
CBA-1500AT3-HC-DSA-V1	FRJ-B-38-40-140	FRJ-B-50-40-140	FRJ-B-65-40-140	FRJ-B-75-40-140	Standard

List of Specifications

Model	Output	Voltage	Frequency	Rated current	Maximum air flow ^{*1,2}	Maximum static pressure	Noise level ^{*3}	Suction port (hose) size	Separately sold suction port (available size)	
CBA-750AT3-HC-DSA-V1	440W	100V single phase	50/60	6.5A	1.3m ³ /min (when zeolite is deposited)	9.5kPa	49-63dB	φ75	φ65・φ50・φ38	
CBA-1000AT3-HC-DSA-V1	500W	100V single phase	50/60	7.8A	2.7m ³ /min (when zeolite is deposited)	9.3-9.5kPa	54-59dB	φ75	φ65・φ50・φ38	
CBA-1500AT3-HC-DSA-V1	1140W	200V single phase	50/60	11.6A	4.1m ³ /min (when zeolite is deposited)	15kPa	55-58dB	φ100	φ75・φ65・φ50・φ38	
Model	200-230V compliant	CE compliant	Panel	Power cable	Filter cleaning function	Remote control feature ^{*4}	Clean room compliant	Primary filter capacity ^{*5}	Mass	Main body dimensions (D×W×H)
CBA-750AT3-HC-DSA-V1	○	○ ^{*6}	AT3	3m	Vibration type	○	○	1.2L	28.5kg	424×336×490mm
CBA-1000AT3-HC-DSA-V1	○	○	AT3	3m	Vibration type	○	○	1.5L	32.5kg	405×386×512mm
CBA-1500AT3-HC-DSA-V1	Standard	○	AT3	3m	Vibration type	○	○	2L	41.8kg	537×386×535mm

^{*1} Maximum air volume: 2.7 - 2.9 m³/min when zeolite is deposited. ^{*2} 2.5 m³/min (CBA-1000AT3-HC-DSA-V1-T) for voltage 200 V voltage only.

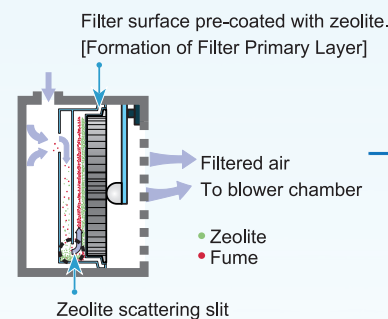
^{*3} Measurements obtained in Scale A (dBA) from a randomly selected position at a distance of 1m using a unit with a hose connected to its suction port. ^{*4} Separately sold remote cable is needed.

^{*5} Because of the present of zeolite, the primary filter capacity will differ from the dust collection capacity. ^{*6} Scheduled to be CE compliant after Nov 2022.

Structure and Features

Primary Filter

Cassette filter that combined filter and fume adsorbent substance zeolite
Uses a cassette filter incorporating zeolite (combined filter and fume adsorbent substance). Zeolite is scattered by sucked in air and instantaneously laminated onto the filter surface, to prevent the adhesion of fumes to the filter surface. Frame and filter material are flame resisting material.



Easily Removable Flange

The size of the flange can be changed with a single touch.
Note: Please set the diameter of the exhaust flange to be wider than the suction flange.

Exhaust Filter

Equipped with HEPA filter as standard.

Filtration rate:
Above: 99.97% for 0.3μ particulates

Clean class:
100,000~10,000

Activated Carbon Cassette

Odor-absorbing cassette type. Easy to replace.

Secondary Filter

Protects electric parts from dust.

Filtration rate: Above: 99% for 0.3μ particulates

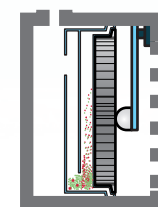
Blower

Blower suction pressure automatically increases according to the load of the primary filter.
Suction power is not affected by accumulated loads.

Filter Cleaning Function [Vibration Type]

When the device stops after cumulative operating time exceeds any preferred setting, the shaker arm automatically vibrates the back of the filter. It causes the primary layer of the filter to peel off/drop off, and returns the filter to its initial condition.
The shaker can also be manually operated via the panel.

(Primary filter section image)
Shaker arm

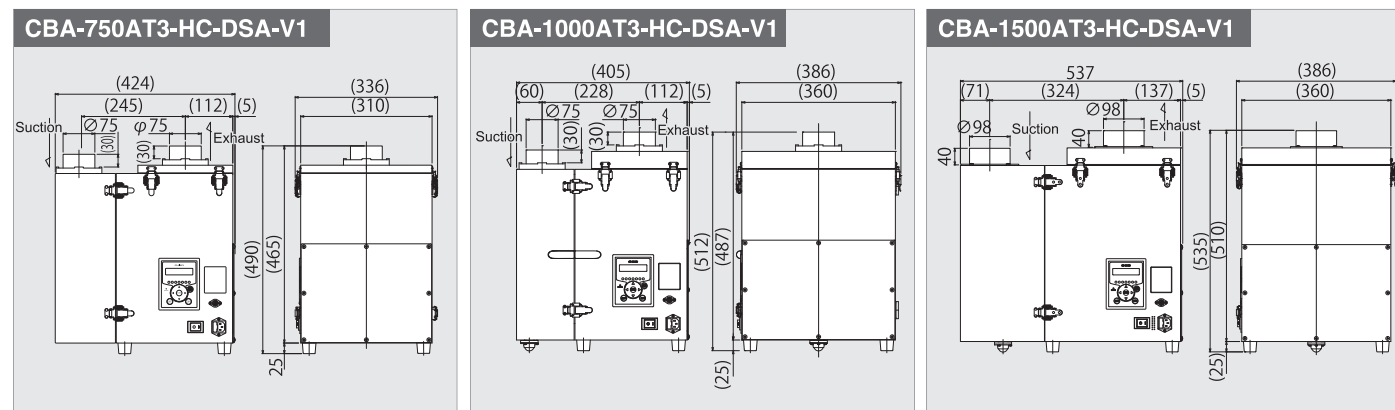


● Zeolite
● Fume

High speed automatic
shaking function

We have accelerated the shaking process after the device switches off to 20 seconds (previously lasted 55 seconds). It improved operational efficiency and enhanced dust removal performance. ^{*}Compared with our old model

Dimensions



Note: Contents may change without notice.