

Z SERIES

10 Tension ranges
from 1 - 5 cN to 20 - 300 cN

Economical low tension measuring instruments
for checking fibers, yarns and fine wires

Special features:

- + Light weight
- + Large, easy to read scale (54 mm Ø)
- + Filament guide and roller shifting mechanism ensure easy acquisition of the running material

Standard features:

- Everything in operator's view:
 - the guide rollers
 - the measured material
 - the readings
- Ball-bearing mounted, V-grooved guide rollers
- Each instrument is individually calibrated for highest accuracy
- Housing made of high-strength plastic
- Inspection Certificate with calibration report optionally available

**Slim filament guide with
small guide rollers – ideal
for limited access space**

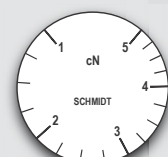
Model ZF2-12

Actual size

Model ZD2-100

Actual size

1st
IN TENSION
METERS
WORLDWIDE®



ZF2-S

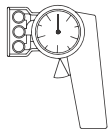


ZF2-10



ZF2-12

**With bigger rollers
for universal use**



Model ZF2

Most popular tension meter in the textile industry with small rollers!

Available Models

| MODEL | Tension Ranges cN | Measuring Head Width* mm | SCHMIDT Calibration Material** |
|----------------|----------------------|-----------------------------|--------------------------------|
| ZF2-5 | 1 - 5 | 43 | Filament: 25 tex |
| ZF2-10 | 1 - 10 | 43 | Filament: 25 tex |
| ZF2-12 | 1 - 12 | 43 | Filament: 25 tex |
| ZF2-20 | 2 - 20 | 43 | Filament: 25 tex |
| ZF2-30 | 3 - 30 | 43 | PA: 0.12 mm Ø |
| ZF2-50 | 5 - 50 | 43 | PA: 0.12 mm Ø |
| ZF2-100 | 10 - 100 | 43 | PA: 0.12 mm Ø |

Other tension ranges available on request. Other units of measure available, such as g.

* Width of filament guide

** Suitable for 95 % of applications (see also chart on page 11)

PA = Polyamide Monofilament

Guide Rollers

| V-grooved | Line Speed V _{max} ... m/min | Roller Material |
|-----------------|--|-----------------------|
| Standard | 900 | Hard-coated aluminium |
| Code K | 2000 | Hard-coated aluminium |
| Code T | 450 | Plastic (POM) black |
| Code W | 450 | Nickel-plated steel |

→ see page F →

Specifications

ZF2 Series

| | |
|----------------------|--|
| Calibration: | According to SCHMIDT factory procedure |
| Accuracy: | ±1 % full scale or ±1 graduation on scale |
| Scale diameter: | 54 mm |
| Temperature range: | 10 - 45 °C |
| Air humidity: | 85 % RH, max. |
| Housing material: | Plastic (POM) |
| Housing dimensions: | 157 x 85 x 32 mm (L x W x H) |
| Weight, net (gross): | approx. 200 g (600 g) |

Special calibration using customer supplied samples is available:
Please supply a sample of at least 5 m in length.

Model ZD2

Universal tension meter for a variety of applications in the textile and wire industries

Available Models

| MODEL | Tension Ranges cN | Measuring Head Width* mm | SCHMIDT Calibration Material** |
|----------------|----------------------|-----------------------------|--------------------------------|
| ZD2-30 | 3 - 30 | 63 | PA: 0.12 mm Ø |
| ZD2-50 | 5 - 50 | 63 | PA: 0.12 mm Ø |
| ZD2-100 | 10 - 100 | 63 | PA: 0.12 mm Ø |
| ZD2-150 | 20 - 150 | 63 | PA: 0.12 mm Ø |
| ZD2-200 | 20 - 200 | 63 | PA: 0.12 mm Ø |
| ZD2-300 | 20 - 300 | 63 | PA: 0.20 mm Ø |

Other tension ranges available on request. Other units of measure available, such as g.

* Width of filament guide

** Suitable for 95 % of applications (see also chart on page 11)

PA = Polyamide Monofilament

Guide Rollers

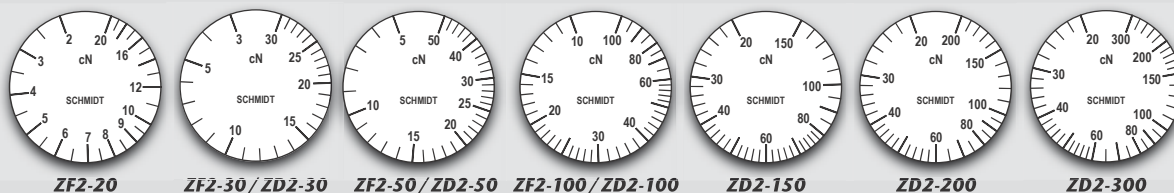
| V-grooved | Line Speed V _{max} ... m/min | Roller Material |
|-----------------|--|--|
| Standard | 2000 | Hard-coated aluminium |
| Code K | 3500 | Hard-coated aluminium |
| Code H | 5000 | Plasma-coated aluminium (for Model ZD2-100 and higher ranges) |
| Code T | 1000 | Plastic (POM) black |
| Code W | 1000 | Nickel-plated steel |
| Code ST | 1000 | Hardened steel |
| Code CE2 | 1000 | Aluminium ceramic-coated |

→ see page F →

Specifications

ZD2 Series

| | |
|----------------------|--|
| Calibration: | According to SCHMIDT factory procedure |
| Accuracy: | ±1 % full scale or ±1 graduation on scale |
| Scale diameter: | 54 mm |
| Temperature range: | 10 - 45 °C |
| Air humidity: | 85 % RH, max. |
| Housing material: | Plastic (POM) |
| Housing dimensions: | 157 x 85 x 32 mm (L x W x H) |
| Weight, net (gross): | approx. 220 g (620 g) |



SCHMIDT scales are manufactured according to the most stringent quality requirements. Printed scales are not used. Instead, each scale is individually marked for the instrument involved. This ensures highest quality. Our special procedure makes it possible to provide tension meters fine tuned to a specific tension range, or calibrated to custom supplied material, or units of measure such as g.

Model with tension range

Code for guide rollers
(if not standard)

Complete Order No.

To place an order
please indicate the complete model number, e.g.:

ZD2-100 + **K** = **ZD2-100-K**